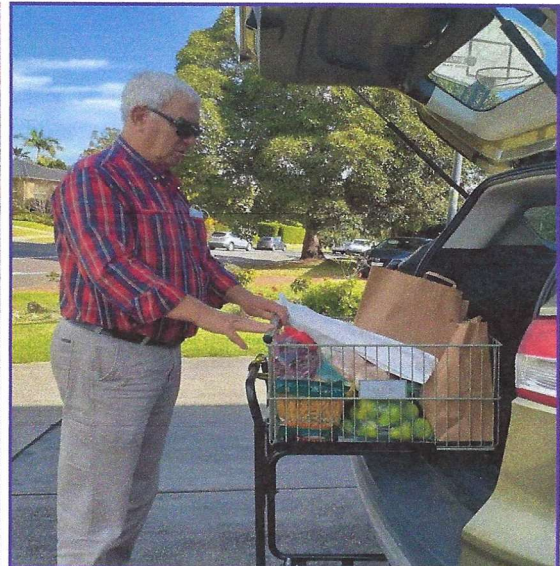


modular  lifetime

SLIDE **A** CART



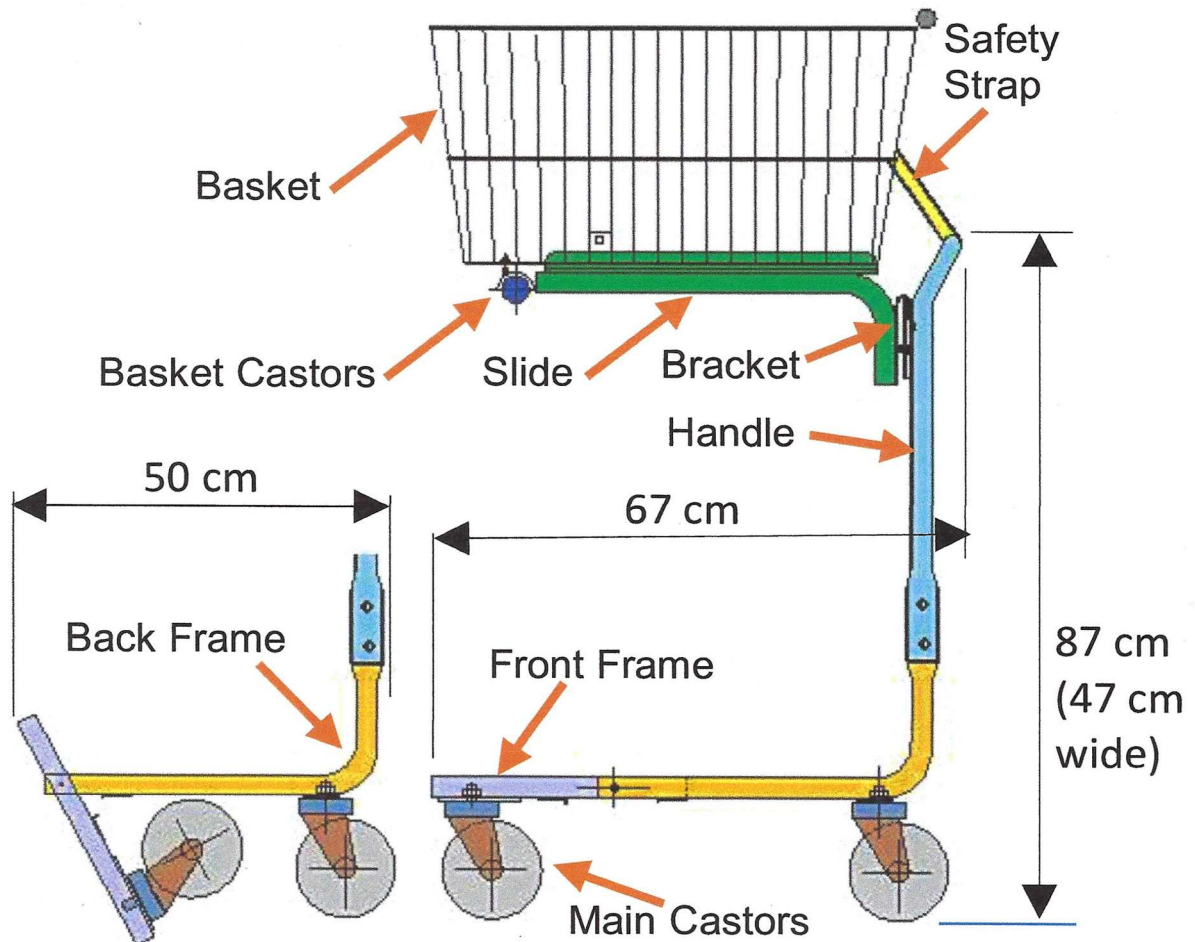
INSTRUCTION MANUAL

SAFETY-CRITICAL PROCEDURES

- ➔ Never leave the SlideAcart unattended on slopes that may cause it to roll away
- ➔ Never allow children to play with or use the SlideAcart as a toy
- ➔ Always hold onto the handles when on slopes / ramps
- ➔ Take extra care on Travelators e.g . when pushing the SlideAcart off the Travelator (slightly pull back on handle - watch video on website www.slideacart.com.au)
- ➔ Never take the SlideAcart anywhere without having the Safety Strap correctly fitted (watch video on website www.slideacart.com.au)
- ➔ Never overload the SlideAcart as this may damage some of the components (refer to specifications)
- ➔ Always look ahead for obstacles on the ground or on the sides to avoid hitting them (Pull SlideAcart in reverse until ground obstacle is cleared- if safe to do so)

SLIDEACART

Overall dimensions and main components



SPECIFICATIONS

Front/Back/Handle: 25 mm steel tube - approx weight 8 kg (including main castors)

Slide: 25 mm steel tube - approx weight 3 kg

Basket: Steel wire (610 mm x 535 mm x 300 mm)

Main Castors: Twin Disc Travelator Castors

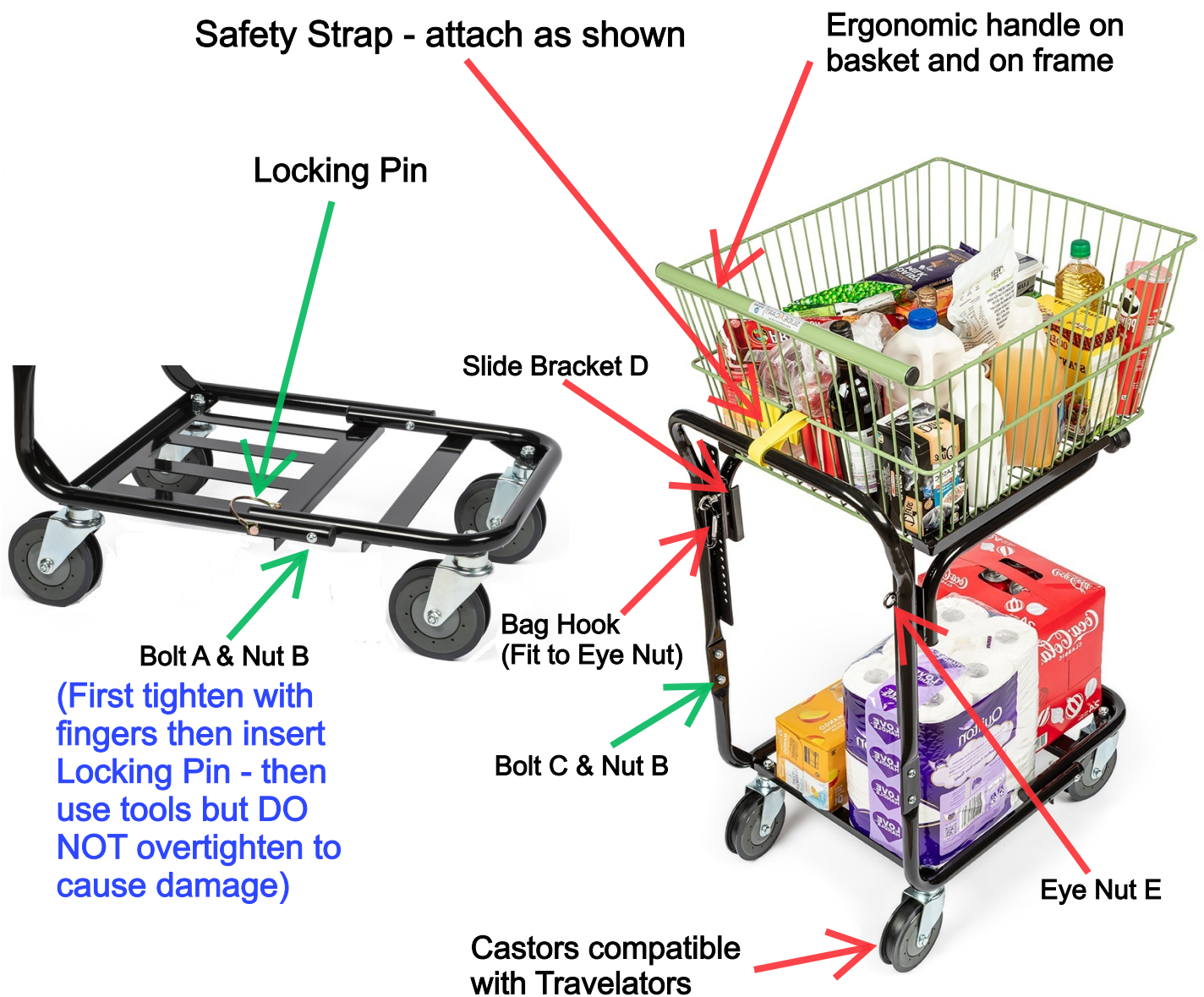
Finish: Frame and Slide - powder coated black
Basket - Powder coated green

Max Carrying Capacity: 25kg top, 50 Kg lower

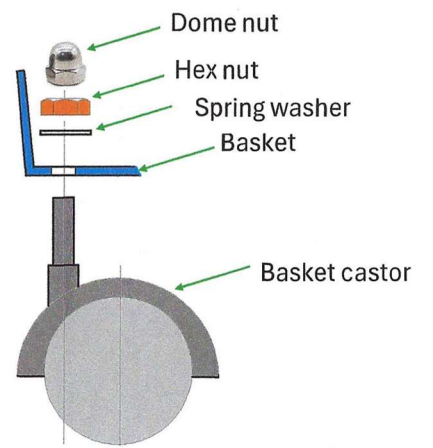
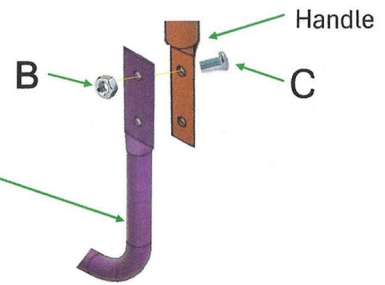
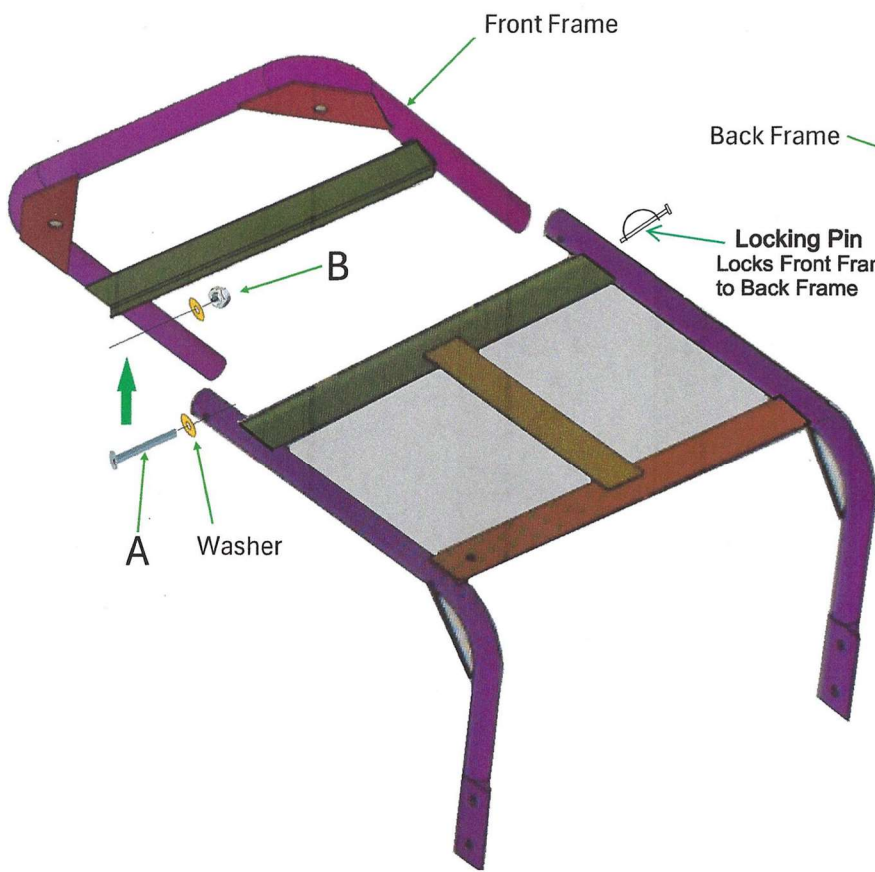
Basket Volume: 84 Litres

SLIDEACART

Features and how to Assemble

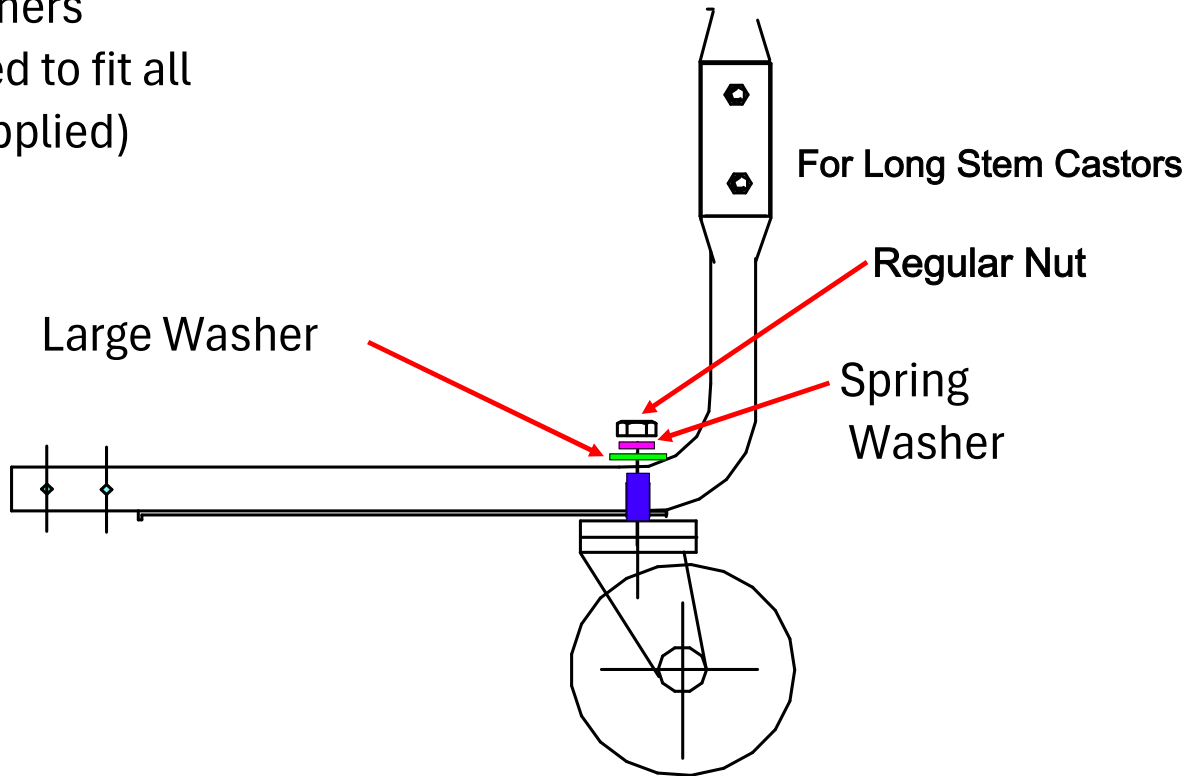


1. Fit Front Frame to Back Frame using bolt A and nut B (x2)
2. Fit Frame Handle to Back Frame using bolt C and nut B (x4)
3. Fit Slide Bracket D to Frame Handle using eye nut E (x2)
(refer to height adjustment instruction information)
4. Attach Removable Slide to Slide Brackets D
5. Place Basket on Removable Slide and attach the Safety Strap (refer video on website for instruction re safety strap)



FITTING MAIN CASTORS

Shifting spanners
recommended to fit all
parts (not supplied)



IMPORTANT NOTE

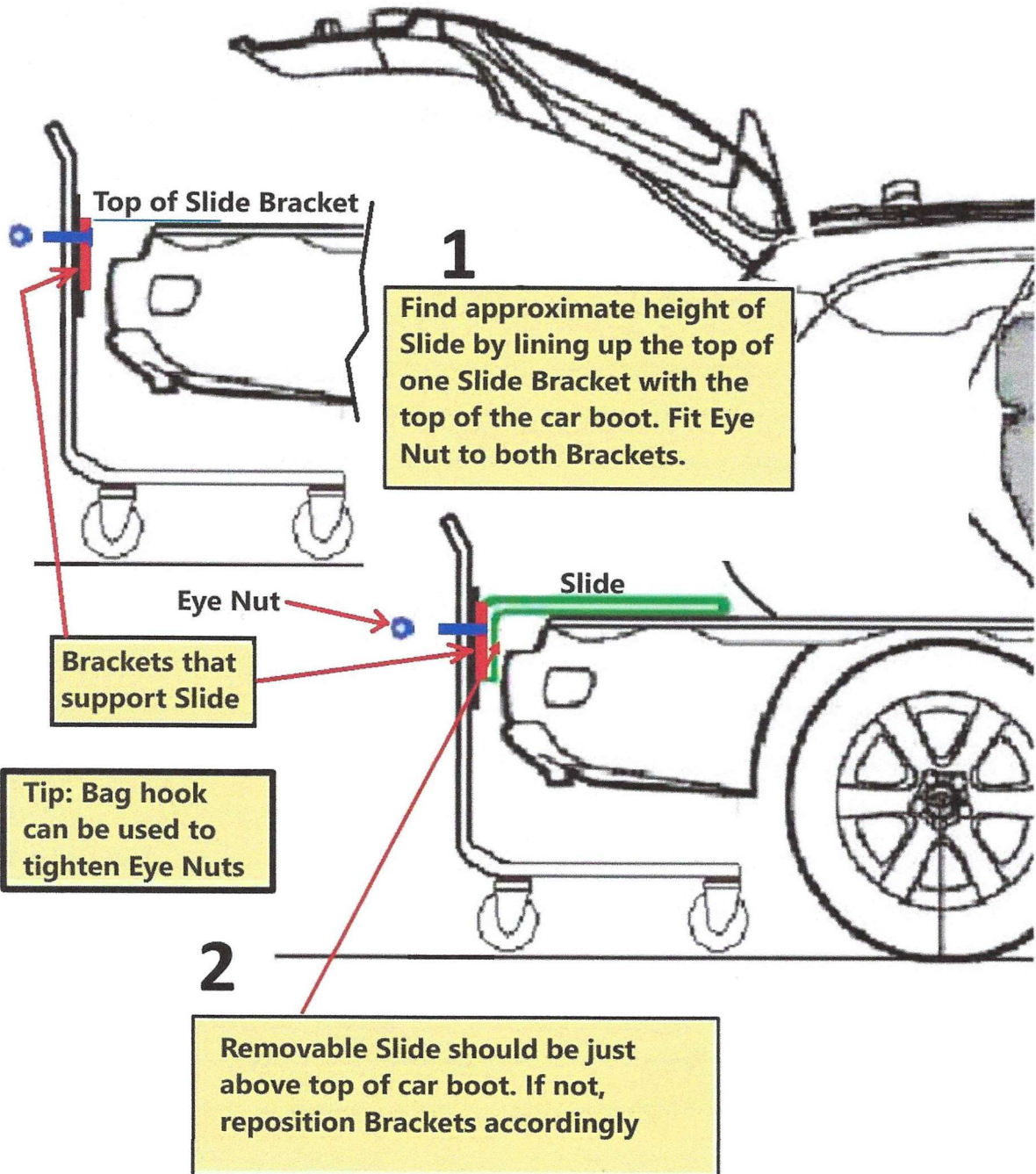
FOR SHORT STEM CASTORS FIT SUPPLIED LOCKNUT ONLY
(does not require washers)



Use small spanner
supplied to hold head
of bolt on castors



ADJUSTING HEIGHT TO SUIT CAR

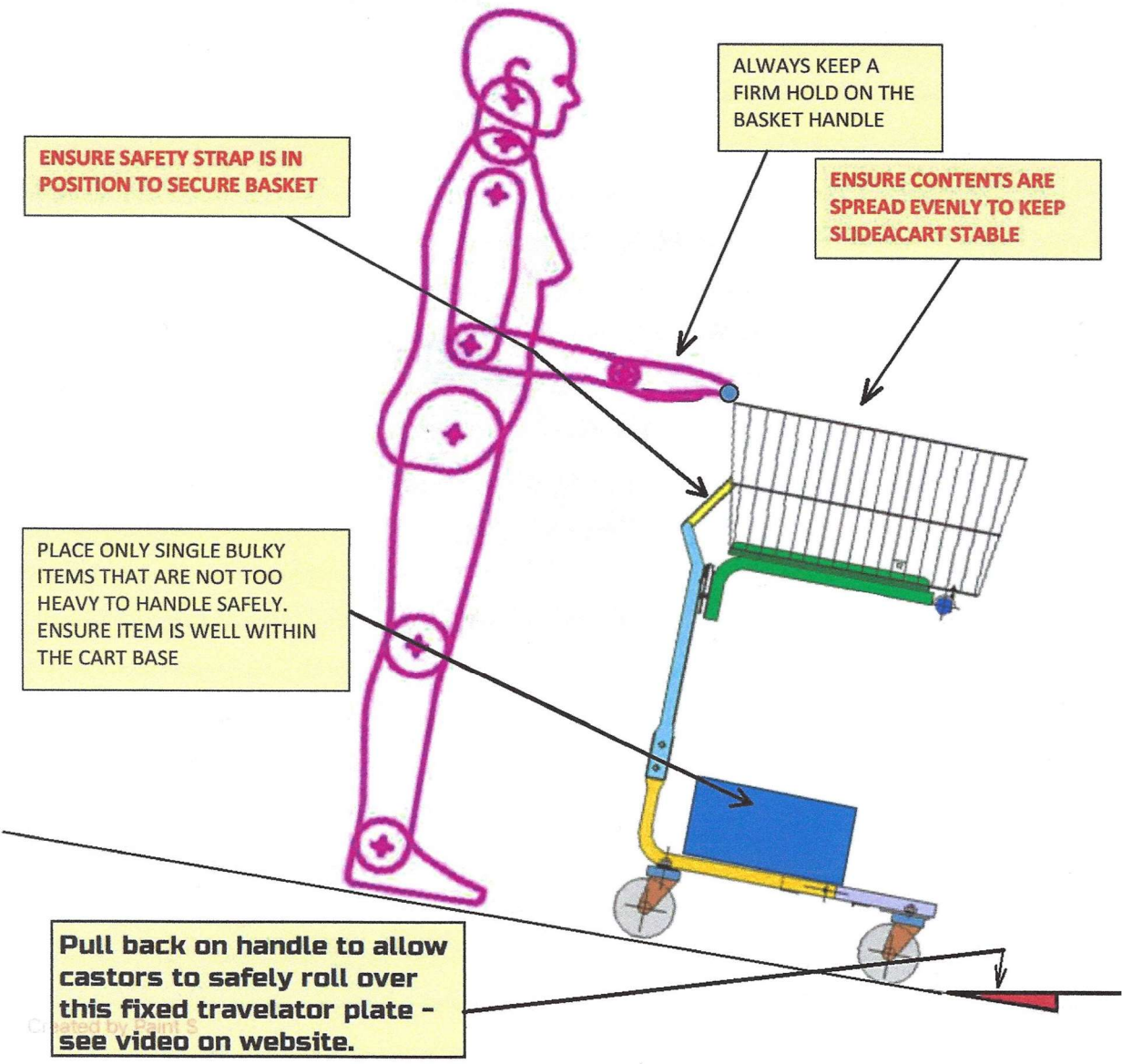




REFER TO WEBSITE VIDEOS FOR OTHER DETAILS

IMPORTANT SAFETY INSTRUCTIONS Part 1

USING TRAVELATORS



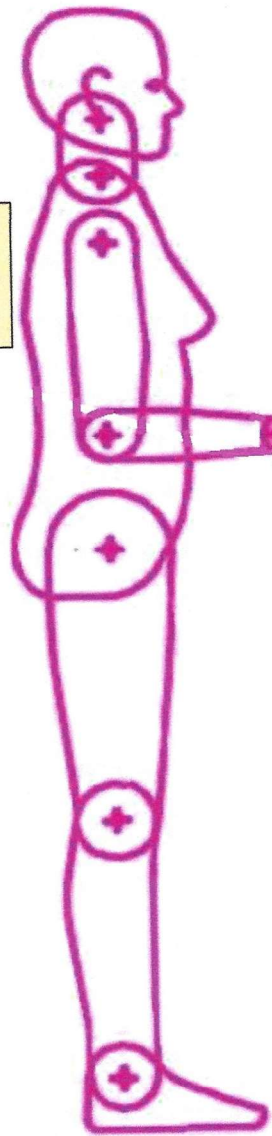


REFER TO THE WEBSITE VIDEOS FOR OTHER DETAILS

IMPORTANT SAFETY INSTRUCTIONS Part 2

PUSHING ON GROUND LEVEL

NEVER MOVE SLIDEACART WITHOUT SAFETY STRAP IN POSITION



PUSH USING EITHER BASKET HANDLE OR CART HANDLE ONLY. WALK AT A NORMAL PACE - **DON'T WALK TOO FAST OR RUN AS THIS MAY CAUSE CART TO TOPPLE**

BABIES OR CHILDREN MUST NEVER BE CARRIED HERE

STEPS OR OBSTACLES MAY CAUSE CART TO TOPPLE IF CASTORS HIT THESE SUDDENLY. SLOW DOWN AND NEGOTIATE THESE BY TIPPING BACK CART HANDLE. **IF STEP OR OBSTACLE IS TOO HIGH SEEK ALTERNATE PATH**



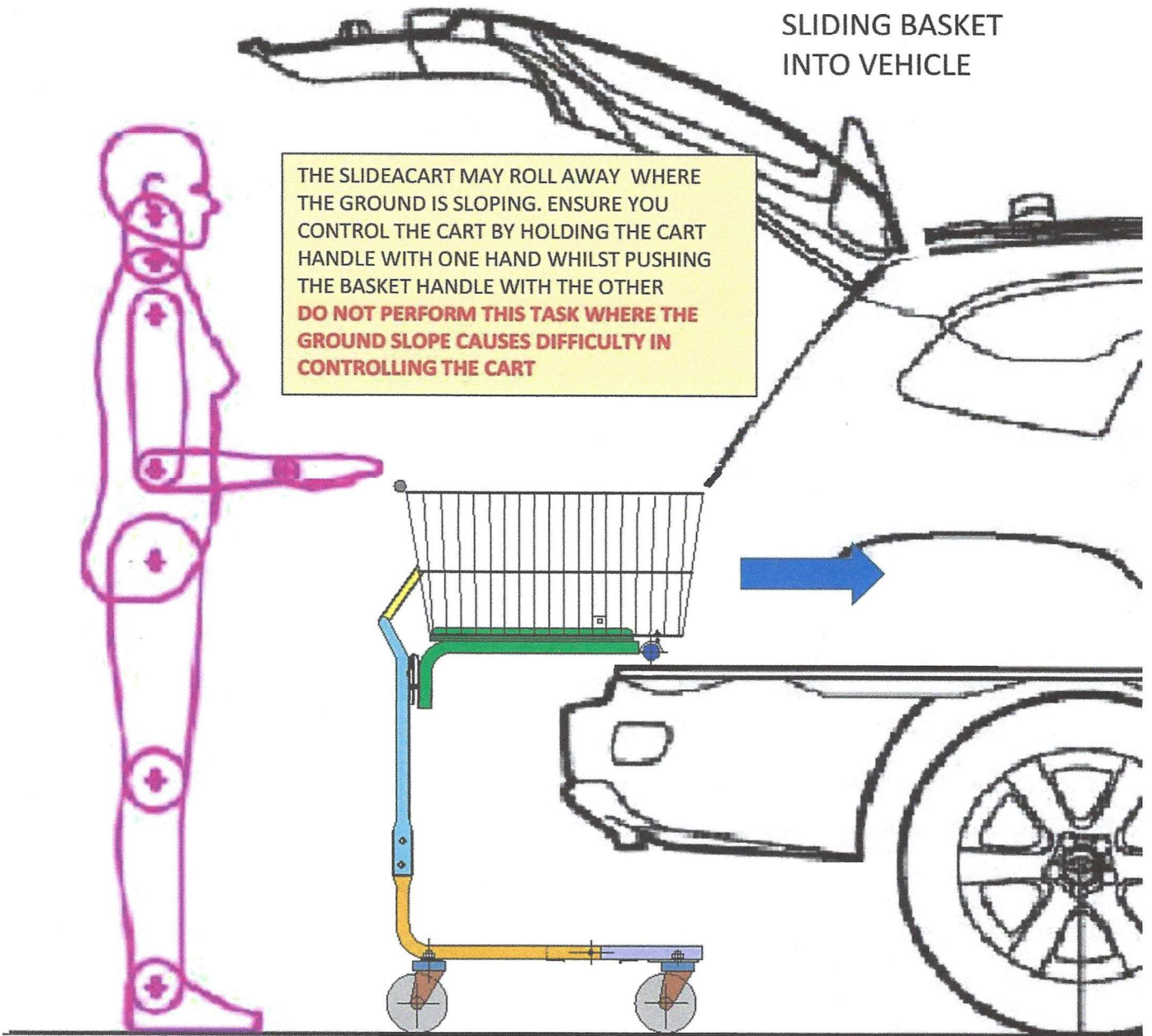


REFER TO THE WEBSITE VIDEOS FOR OTHER DETAILS

IMPORTANT SAFETY INSTRUCTIONS Part 3

SLIDING BASKET
INTO VEHICLE

THE SLIDEACART MAY ROLL AWAY WHERE THE GROUND IS SLOPING. ENSURE YOU CONTROL THE CART BY HOLDING THE CART HANDLE WITH ONE HAND WHILST PUSHING THE BASKET HANDLE WITH THE OTHER
DO NOT PERFORM THIS TASK WHERE THE GROUND SLOPE CAUSES DIFFICULTY IN CONTROLLING THE CART



Placement of SlideAcart inside boot of car



Clip Slide on basket
or place next to
basket (see video
on website)



Clip Slide on basket
or place next to
basket

For smaller vehicles - rotate front frame to fit inside boot
Basket can be turned sideways as shown in photo

Alternative positions of frame for smaller vehicles

